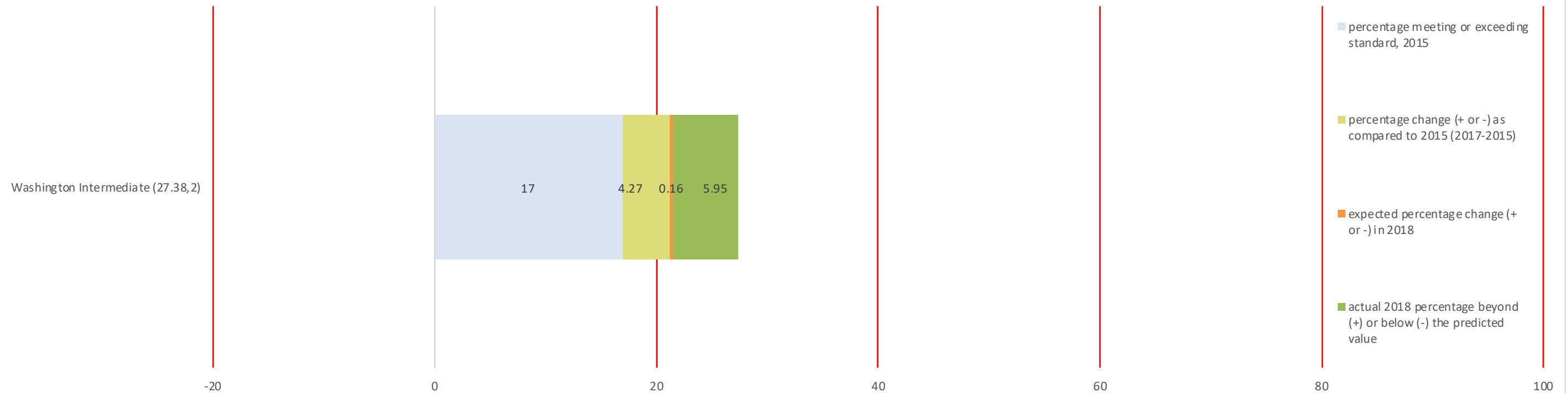


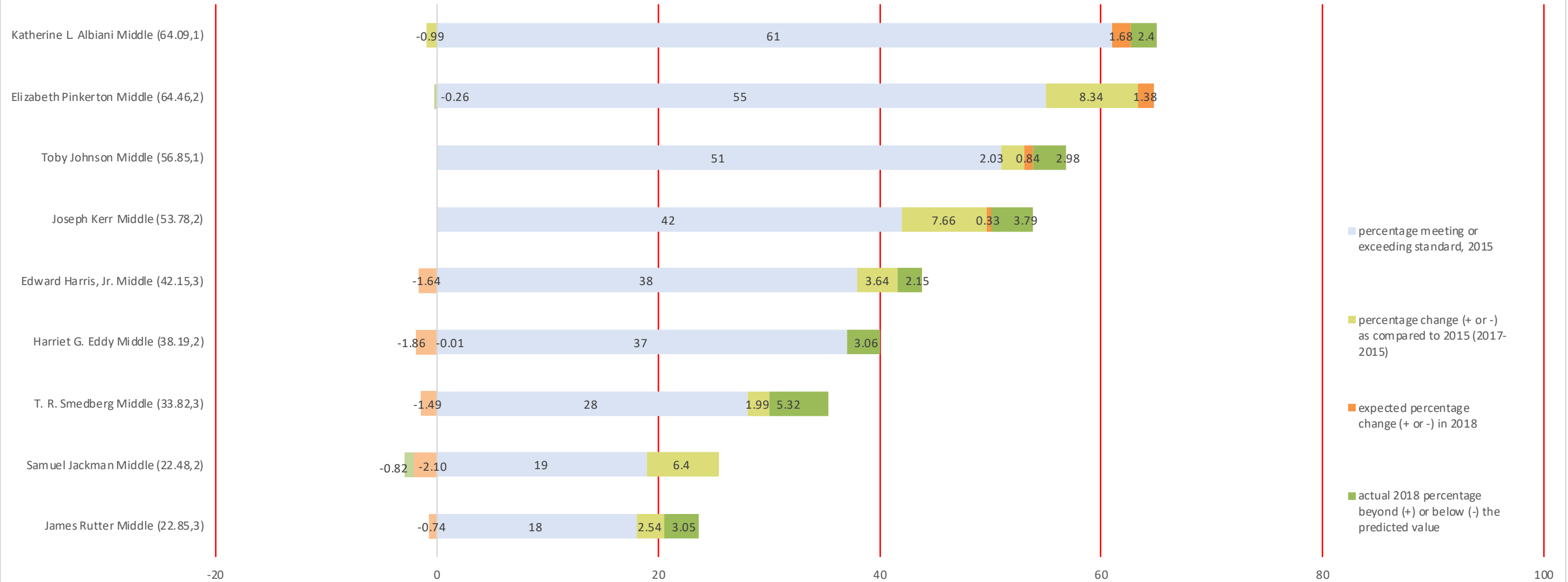
SBAC performance for middle schools in Dinuba:
 How 2018 SBAC performance aligns with the predicted change using 2015-2017 SBAC data & other school-level characteristics



After each school's name on the vertical axis, the first number is the percentage of students meeting or exceeding standard in 2018, followed by an indicator of progress over time:

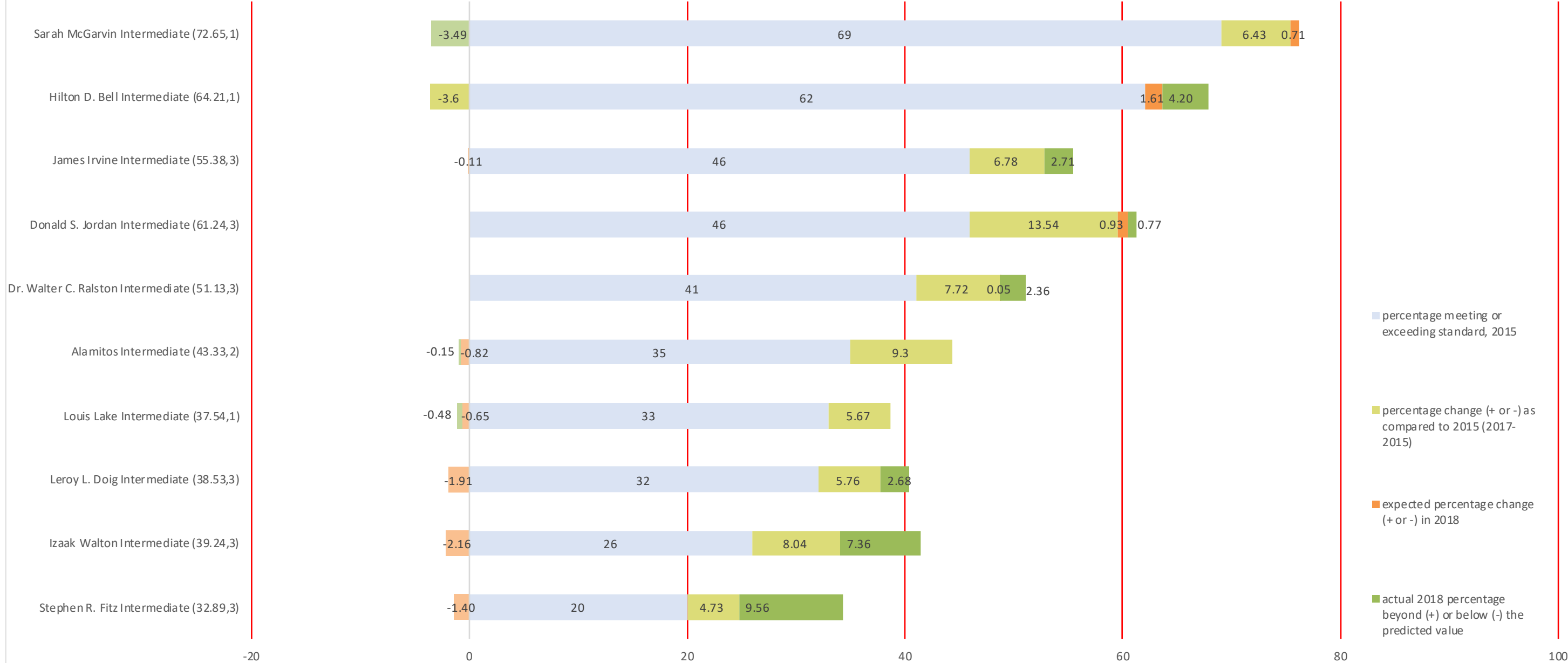
| | |
|---|---|
| 0: the school did not exceed the prediction in any year | 1: the school performed better than the prediction in one year |
| 2: the school performed better than the prediction in two years | 3: the school performed better than the prediction in all three years |

SBAC performance for middle schools in Elk Grove:
 How 2018 SBAC performance aligns with the predicted change using 2015-2017 SBAC data & other school-level characteristics



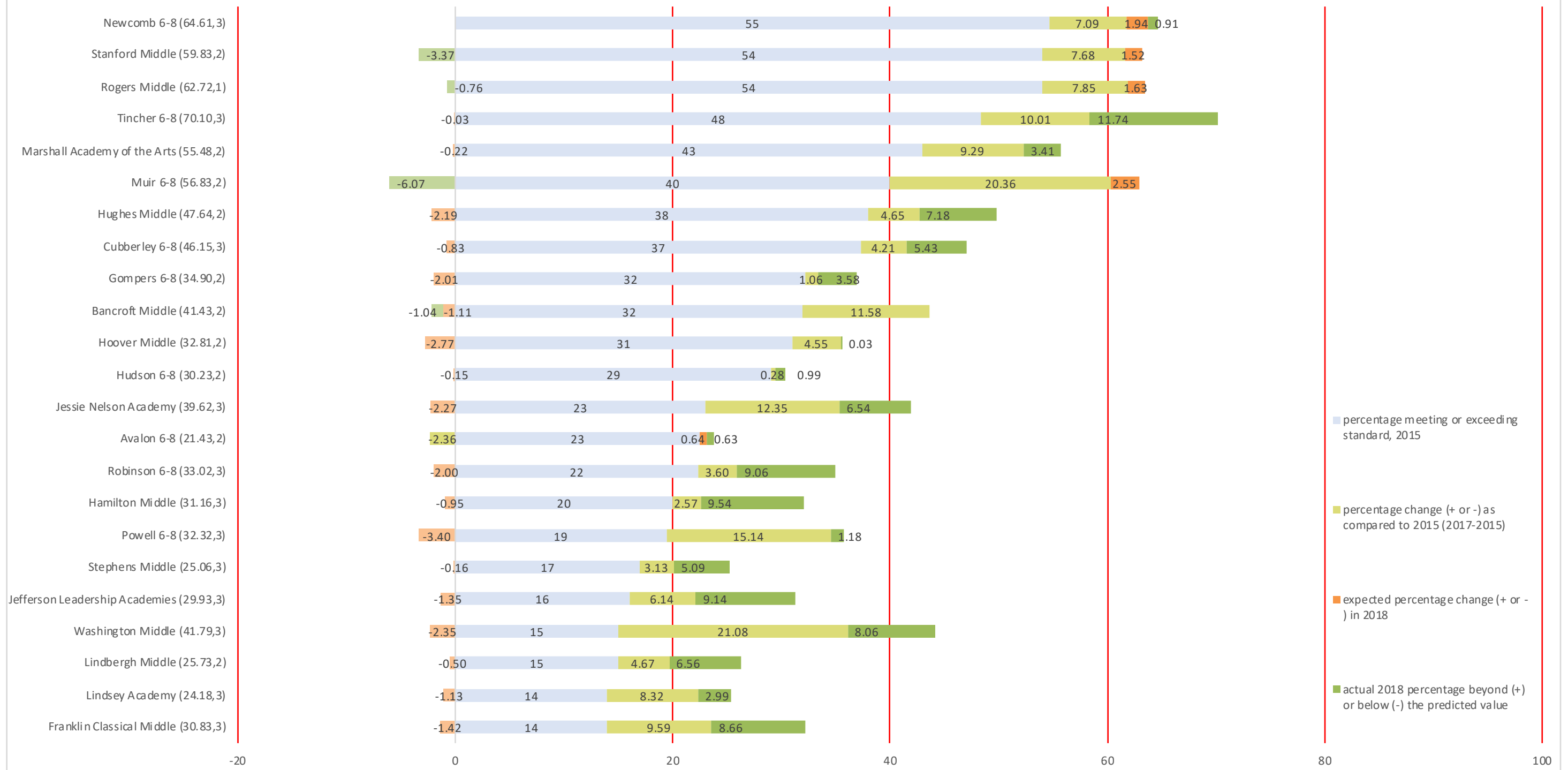
After each school's name on the vertical axis, the first number is the percentage of students meeting or exceeding standard in 2018, followed by an indicator of progress over time:
 0: the school did not exceed the prediction in any year
 1: the school performed better than the prediction in one year
 2: the school performed better than the prediction in two years
 3: the school performed better than the prediction in all three years

SBAC performance for middle schools in Garden Grove:
 How 2018 SBAC performance aligns with the predicted change using 2015-2017 SBAC data & other school-level characteristics



After each school's name on the vertical axis, the first number is the percentage of students meeting or exceeding standard in 2018, followed by an indicator of progress over time:
 0: the school did not exceed the prediction in any year
 1: the school performed better than the prediction in one year
 2: the school performed better than the prediction in two years
 3: the school performed better than the prediction in all three years

SBAC performance for middle schools in Long Beach:
 How 2018 SBAC performance aligns with the predicted change using 2015-2017 SBAC data & other school-level characteristics



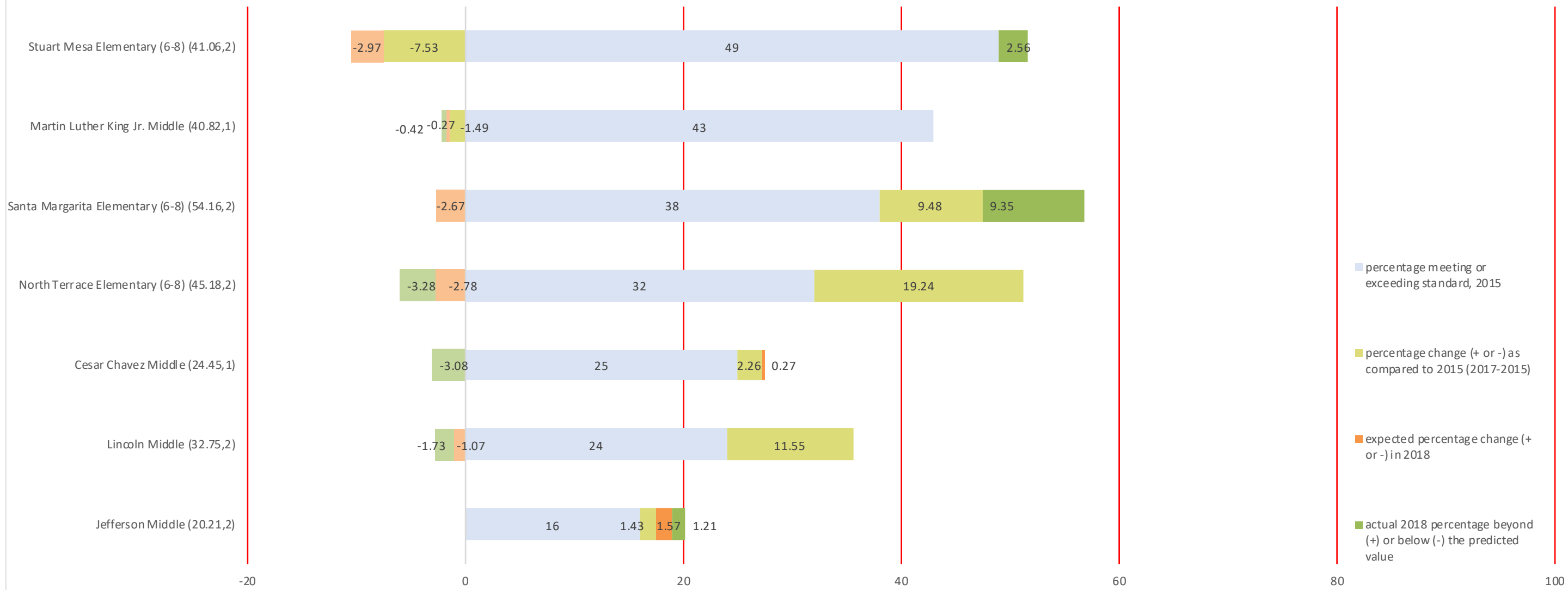
After each school's name on the vertical axis, the first number is the percentage of students meeting or exceeding standard in 2018, followed by an indicator of progress over time:
 0: the school did not exceed the prediction in any year
 1: the school performed better than the prediction in one year
 2: the school performed better than the prediction in two years
 3: the school performed better than the prediction in all three years

SBAC performance for middle schools in Oakland: How 2018 SBAC performance aligns with the predicted change using 2015-2017 SBAC data & other school-level characteristics



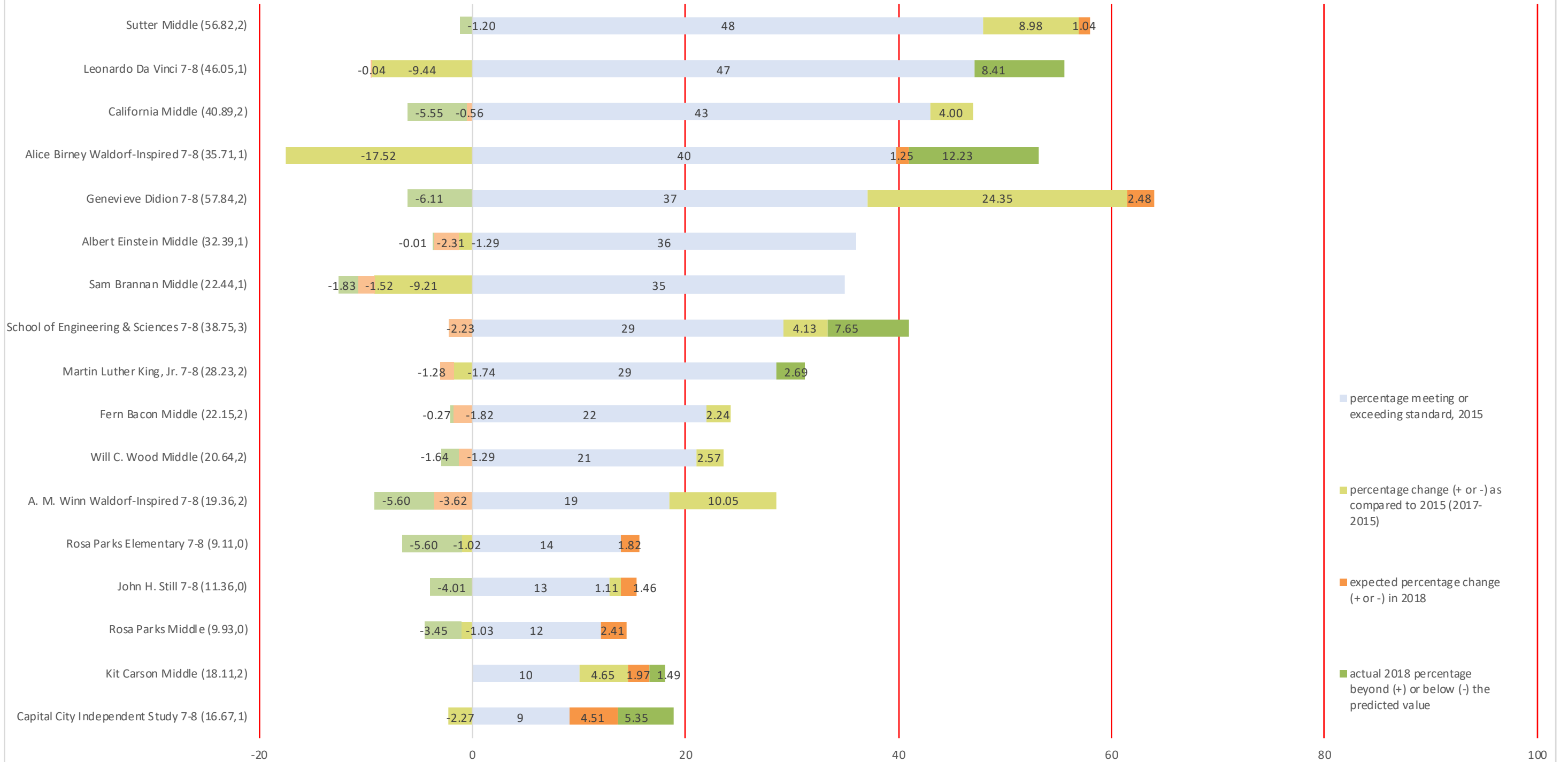
After each school's name on the vertical axis, the first number is the percentage of students meeting or exceeding standard in 2018, followed by an indicator of progress over time:
 0: the school did not exceed the prediction in any year
 1: the school performed better than the prediction in one year
 2: the school performed better than the prediction in two years
 3: the school performed better than the prediction in all three years

SBAC performance for middle schools in Oceanside:
 How 2018 SBAC performance aligns with the predicted change using 2015-2017 SBAC data & other school-level characteristics



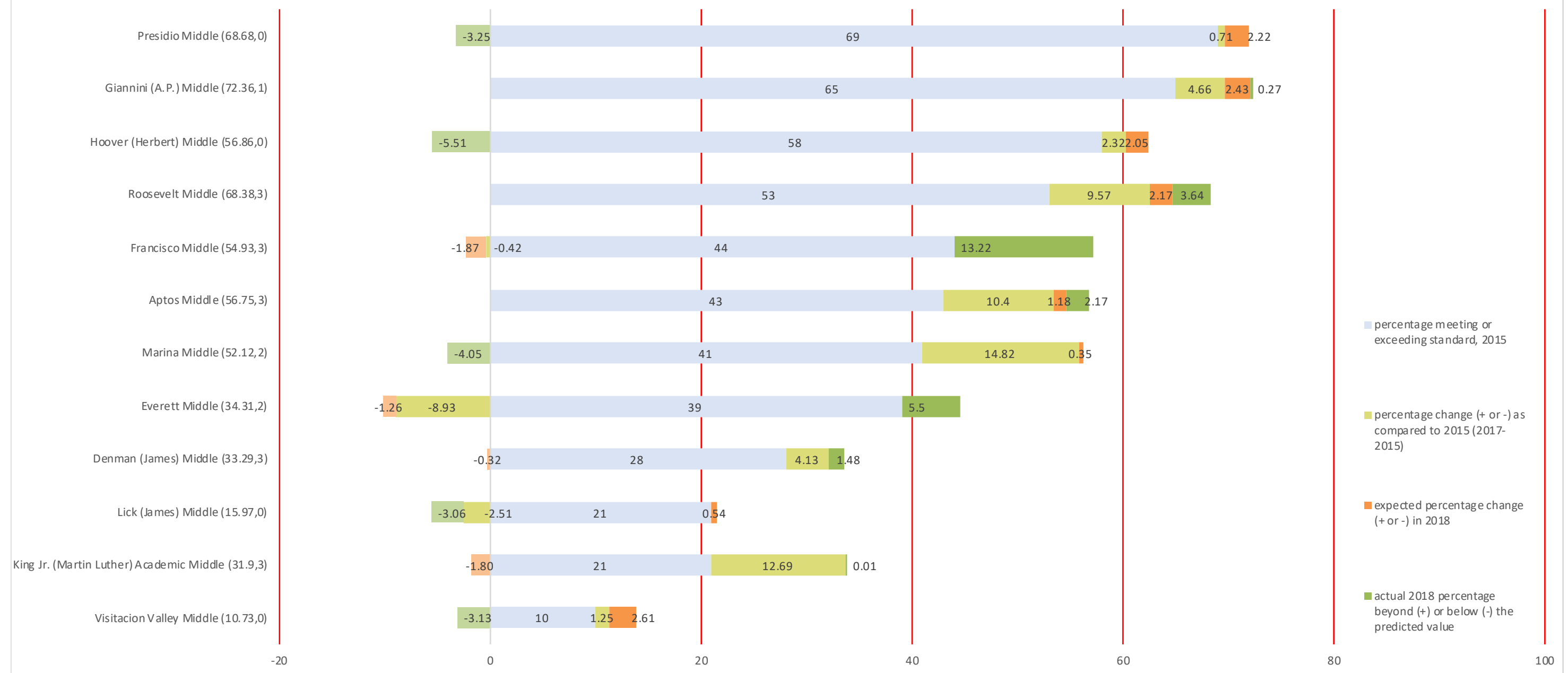
After each school's name on the vertical axis, the first number is the percentage of students meeting or exceeding standard in 2018, followed by an indicator of progress over time:
 0: the school did not exceed the prediction in any year
 1: the school performed better than the prediction in one year
 2: the school performed better than the prediction in two years
 3: the school performed better than the prediction in all three years

SBAC performance for middle schools in Sacramento City:
 How 2018 SBAC performance aligns with the predicted change using 2015-2017 SBAC data & other school-level characteristics



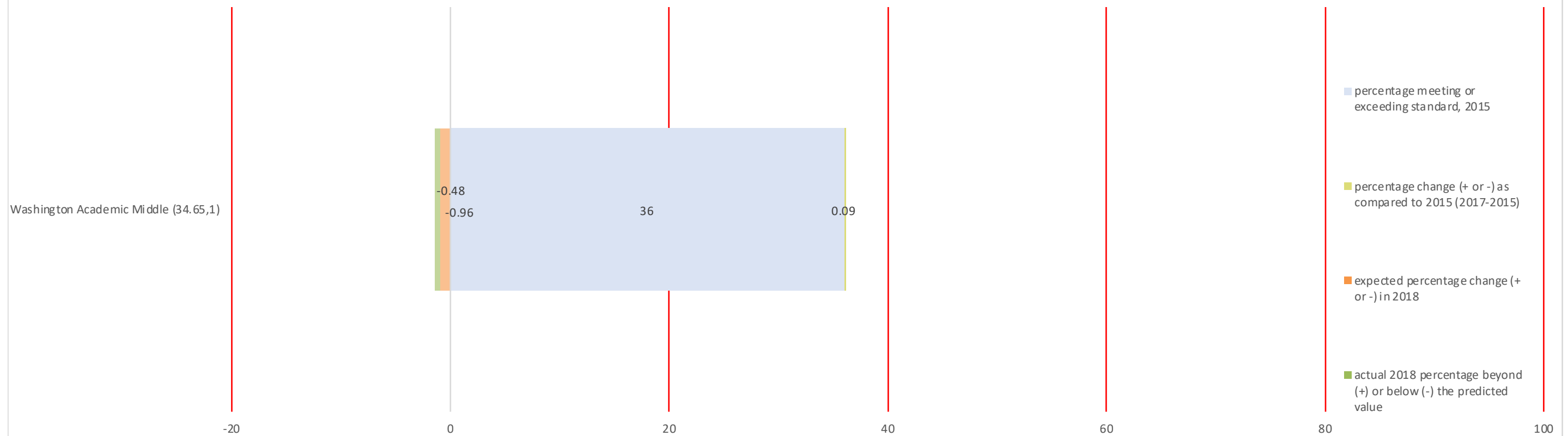
After each school's name on the vertical axis, the first number is the percentage of students meeting or exceeding standard in 2018, followed by an indicator of progress over time:
 0: the school did not exceed the prediction in any year
 1: the school performed better than the prediction in one year
 2: the school performed better than the prediction in two years
 3: the school performed better than the prediction in all three years

SBAC performance for middle schools in San Francisco:
 How 2018 SBAC performance aligns with the predicted change using 2015-2017 SBAC data & other school-level characteristics



After each school's name on the vertical axis, the first number is the percentage of students meeting or exceeding standard in 2018, followed by an indicator of progress over time:
 0: the school did not exceed the prediction in any year
 1: the school performed better than the prediction in one year
 2: the school performed better than the prediction in two years
 3: the school performed better than the prediction in all three years

SBAC performance for middle schools in Sanger:
 How 2018 SBAC performance aligns with the predicted change using 2015-2017 SBAC data & other school-level characteristics



After each school's name on the vertical axis, the first number is the percentage of students meeting or exceeding standard in 2018, followed by an indicator of progress over time:

| | |
|---|---|
| 0: the school did not exceed the prediction in any year | 1: the school performed better than the prediction in one year |
| 2: the school performed better than the prediction in two years | 3: the school performed better than the prediction in all three years |

SBAC performance for middle schools in Santa Ana:
 How 2018 SBAC performance aligns with the predicted change using 2015-2017 SBAC data & other school-level characteristics



After each school's name on the vertical axis, the first number is the percentage of students meeting or exceeding standard in 2018, followed by an indicator of progress over time:
 0: the school did not exceed the prediction in any year
 1: the school performed better than the prediction in one year
 2: the school performed better than the prediction in two years
 3: the school performed better than the prediction in all three years